

George

Making it happen



Information: George Municipality Communications Department
Layout: Group Editors Graphic Designer Portia Maree

SAVE WATER | SPAAR WATER

YONGA AMANZI



REPORT ALL WATER LEAKS TO
044 801 9262/66 or a/h 044 801 6300



George

Making it happen



Director Electrotechnical Services, Bongani Mandla



Photograph for illustrative purposes only.

Update on Thembalethu's new 66 kV substation

The new 66/11kV 40MVA electrical substation that is currently under construction in Thembalethu will not only improve reliability and provide adequate capacity of electrical supply to the area, but is also one of the largest of its kind in the Southern Cape and a major bulk infrastructure milestone for the city.

The new substation will alleviate load on the substations that are currently supplying Thembalethu and serve as an important catalyst for investment funding from both the state and business.

"George Municipality is a key growth area for many investors, but it requires certain very expensive bulk infrastructure to support the growth. The allocation of supportive funding from the national Department of Mineral Resources and Energy to build this substation signals trust in the local authority to facilitate growth and service delivery. In turn, the municipality can provide the kind of infrastructure required for outside manufacturers and business to invest and for housing supportive facilities to be developed across the municipal area," said Executive Mayor Leon Van Wyk.

Adequate capacity will be provided

Municipality Director for Electrotechnical Services Bongani Mandla said when completed, the substation will provide power to Thembalethu and other suburbs east of the N2 that are currently supplied from substations across the highway. "The overall impact on the city's grid will be adequate capacity for a growing city and more reliable supply to especially the eastern areas," said Mandla.

Construction update

Construction on the Thembalethu 66kV substation will run across three financial years. The first phase, costing about R30-million, is funded two thirds by the municipality and the rest by the Integrated National Electrification Programme grant (INEP) of the national Department of Mineral Resources and Energy. The entire project is costed at an estimated R58-million.

The construction is well underway with the civil engineering works to construct an engineered platform for the new substation. The construction of the platform, roadworks, oil dam, concrete plinths, installation of the water mains, sewer lines, the erection of the security fence and electrical infrastructure that form part of the platform, are due for completion by the end of October 2022. The electrical design and procurement of material as per the final design for the electrical works has progressed well and this includes the steel supports, switch gear, earth mat, electrical protection and ripple control.

The substation's construction consists mostly of the manufacturing, supply and installation of 11kV and 66kV equipment, two new 66/11kV 20MVA power transformers and ancillary protection and control equipment, and will commence early in 2023.

Background

The planning for the substation goes as far back as 20 years, when the Ballots Bay 11kV substation in the southern part of Thembalethu was established. This 11kV substation project at the time also made provision for a 66kV substation.

The electrical master plans for George indicated that a 66kV substation would be needed in the future. An environmental impact study (EIA) was finalised in 2008 to gain approval for the 66kV power line routes to the various proposed substations in George which included the power lines to Thembalethu.

In 2011, the new 132kV Schaapkop substation was established to provide sufficient capacity after the existing Eskom bulk supply had reached capacity in George.

The bulk municipal electrical supply to Thembalethu also reached capacity and had to be increased to enable the electrification programme to continue. Funds were provided for the first phase of the establishment of the municipal 66kV substation and the 66kV power line from SS Protea in Pacaltsdorp to Thembalethu was built in 2014/15. This power line is energised at 11kV



A municipality that works, works for all

Just a tiny fraction – a mere 16% – of South African municipalities received clean audits from the Auditor-General for the 2020/21 financial year. George Municipality is one of the 41 municipalities out of a total of 257 that did.

Municipal services are grinding to a halt countrywide due to local government incompetence, political infighting and corruption, leading to crumbling infrastructure and dry taps. Municipalities owe Eskom billions of rand and there is no light at the end of the tunnel – literally – as the railway tracks and copper cables have been stolen or vandalised.

As is the case all over South Africa, too many Georgians are poverty-stricken, but locally, residents are not exposed to levels of decay and complete neglect that lead to weeks without water and Eskom cutting the power supply due to non-payment.

Load-shedding is a nationwide reality and vandalism and infrastructure theft are definitely on the increase in George, but this can hardly be laid at the door of the municipality.

In George we still have a functioning local government, not perfect, and there is always room for improvement, but on the whole our municipality seems to take its service delivery mandate seriously. And ultimately, this is the only issue at stake. Is your refuse collected, roads maintained, is the tap water

safe to drink – in short, does the city function?

The yardstick used to judge a local government and municipality should be the standard of service delivery, the boosting of economic growth by facilitating ease of doing business coupled with attracting investment, as well as long-term infrastructure planning and securing grants to ensure continued service and growth.

The aim of this supplement is to give the municipality and the mayor the opportunity to convey to residents what they are doing to achieve the above.

NB: These are not journalistic articles, and the content, bar the vox pops and the interview with the mayor, was supplied by George Municipality itself. It grants the municipality the platform to inform citizens of projects underway and in the pipeline.

It is published by *George Herald* as a service to our readers – the current and future residents of the George municipal area.

We hope you find it of value.

Ilse Schoonraad, Group Editor of Group Editors, publisher of George Herald



Portfolio Councillor Ncicelo Mbete – Electrotechnical Services and Fleet Management



Thembalethu is growing by the day as people move to George looking for a better life.

Photo: Michelle Pienaar

to supplement the capacity and will be energised at 66kV to supply the new 66kV substation once it is completed.

During a UISP* (Upgrading of Informal Settlements Programme) community presentation in Thembalethu in July 2014, the public was updated about an analysis completed to determine the impact of the additional electrical load on the existing Thembalethu electrical network as a result of the electrification projects that had been completed.

At this stage the first section of the 66kV power line between Protea Substation and Thembalethu's 66/11kV substation would have

to be established and operated on 11kV before any further electrification can take place. Further urgent upgrades included the establishment of the municipal 66/1 kV substation.

The electrification of the formalised, as well as informal areas in Thembalethu, cannot continue without the upgrading of the bulk services in Thembalethu. The establishment of the substation is a key project in this regard. Subsequently, the 66kV power line section between Thembalethu and the Glenwood Substation in Knysna Road has also been completed to place the new Thembalethu 66kV substation on a ring feed.



Leon Van Wyk on infrastructure upgrades in George. Scan QR code to view video



George Mayor Leon van Wyk in his office.
Photo: Eugene Gunning

Mayor Leon van Wyk shares his thoughts

George Herald journalist Eugene Gunning recently visited George Mayor Leon van Wyk in his office at George Municipality to gauge the mayor's thoughts on George, its people and the future of our lovely town.

On being a mayor for all

As executive mayor of George, my focus is constantly on how to take George forward to achieve a better life for all at an individual level as well as from an overall perspective. Firstly, we are determined to deliver core services at a consistently high standard; and then to ensure that we create an enabling and facilitating environment for business, our communities and citizens.

We have many citizens who live in tough and difficult circumstances of poverty, often in informal settlements with a struggle to find employment. Once we have met our constitutional requirements in respect of services, there is only 2 to 3% of our annual budget remaining to assist in providing further assistance and relief for sport, community safety, crèches, soup kitchens and social services.

The best way to assist these citizens and the entire George in

a sustainable way, is through the provision of access to employment and business opportunities that will provide dignity and the ability to develop skills.

Ensuring growth in economic activity is therefore the key objective as ongoing temporary relief does not provide a sustainable solution.

On the importance of sound infrastructure

As a country, South Africa is not providing the growth essential for job creation. Simultaneously, water, sewerage, electricity and road infrastructure is ageing rapidly and many municipalities are unable to do the necessary repairs and refurbishment. In George we recognise the importance of refurbishment of infrastructure and have made budgetary provision for such projects over the next 3 to 5 years.

We are just as concerned about the security of electricity provision.

We are also actively pursuing avenues to boost economic activity in sectors that will boost employment and provide more opportunities for our citizens to improve their skills.

Throughout the world, it is evident

that investment in infrastructure coupled to high standards of service delivery drives private sector investment that then results in employment growth. This is the best way in which we can assist our entire population to experience an improvement in their living conditions and opportunities.

On tourism growth

George Airport is the entry point along with the N2 for many tourists visiting the Garden Route. In many respects, I believe the Garden Route has not yet reached its full potential as a tourist destination. We aim to regularly host weekend sporting and other events to attract tourists. We already host school sport, golf, mountain biking, trail running, marathons, surfing and adventure sports. We would welcome more activities or attractions. Each of our restaurants could craft a special dish on their menu to add further to the memorable experience we wish to provide tourists. It is also our responsibility to ensure that our visitors enjoy the relaxed lifestyle and outdoor activities on offer.

On George as destination

Located at the foot of the mountains and near beaches and

lakes, George provides a unique feel, lifestyle and attractiveness with a wide range of activities on offer – from paddling canoes, hiking and swimming in the sea to enjoying strawberries. We also have our own symphony orchestra and theatre. I would like to believe that any activity involving a walk on one of our beaches, viewing the sunset, or a great meal, could convince any tourist to want to visit George repeatedly.

On disparities and different vantage points

We all see the world differently from our own perspectives, background or circumstances, without recognising that we all face the same challenge. We need to learn to collaborate to always enhance our George brand. As mayor and councillors, we need to drive financial, economic, environmental and social sustainability to make George an even more successful, attractive city.

George has progressed from 30 years ago and future growth will see changes as we drive substantial investment going into Thembalethu and see substantial opportunities for housing within Pacaltsdorp.



Mayor Van Wyk chatting to Go George officials during a Municipal Jamboree in Ward 16 and 17 in 2021.

Leon Van Wyk bespreek slimstadkonsepte. Skandeer QR-kode om video te kyk



Rauch / Gertenbach
Prokureurs • Attorneys

☎ 044 601 9900
✉ office@rgprok.com
🌐 www.rgprok.co.za

Meet our Conveyancers

For your convenience, we have a **dedicated team** of specialists in Conveyancing, consisting of: 6 Conveyancers, 5 Notaries and 13 paralegals and support staff.



Jaco Fourie
Conveyancer & Notary



Maryke Landman
Conveyancer & Notary



Paul Delport
Conveyancer & Notary



Dirk Schoeman
Conveyancer & Notary



Kelly Fourie
Conveyancer



Lorandi van der Merwe
Jnr Conveyancer



SERVING YOU IN:

- ☒ MOSSEL BAY
- ☒ GEORGE
- ☒ HARTENBOS
- ☒ DANA BAY

Contact us for professional assistance

Printed and distributed by Group Editors

Grant funding takes George budget to new heights

George Municipality is the first non-metro municipality to ever receive a Budget Facility for Infrastructure Funding (BFI) grant to the value of R1,197-billion from National Treasury, effectively taking the Capital Budget over the next three years to the largest it has ever been in the history of George. The funding will be provided over the next forty (40) months for implementing the various components of the Potable Water Security and Remedial Works projects.



At the construction site for the 20ML/d extension to the New Water Treatment Works (New WTW) are, from left: Henry Hill (Portfolio Cllr Planning and Development), Jannie Koegelenberg (Engineer, Royal Haskoning DHV), Gerard de Swardt (Project Manager: George Civil Engineering Services), Jackie von Brandis (Portfolio Cllr Civil Engineering Services: Capital Projects & BFI), Ald Leon Van Wyk and Jonathan Bernon (Construction Manager, Icon Construction).



At the Schaapkop Pump Station, the slope on the river bank is being stabilised and rehabilitated.



What is a Budget Facility for Infrastructure Funding (BFI)?

The BFI funding is allocated through the Regional Bulk Infrastructure Grant, which is managed by the Department of Water and Sanitation.

It is well known that there is widespread concern about the state of water and waste water infrastructure in South Africa and that significant amounts of funding will be required to rehabilitate this infrastructure within municipalities.

George Municipality is no exception and provides water services to over 212 120 people from 62 722 households (STATSSA 2017) across 28 wards, including the coastal areas of Kleinkrantz, Wilderness, Victoria Bay, Herold's Bay and Gwaiing, as well as the rural areas of Herold, Waboomskraal, Uniondale and Haarlem.

Portfolio Councillor for Civil Engineering: Capital Projects and BFI, Jackie von Brandis, highlighted that water is crucial for drinking and sanitation as it sustains the health of residents, food production and healthy ecosystems.

"With this in mind and with the continued emphasis on water security, George needs to become a water smart city. This is done through a visionary approach from Council and the administration to integrate sustainable urban planning and water management. The allocation of the BFI grant and proper budget management will make George the city for a sustainable future," said Cllr von Brandis.

Skilled and innovative planning by officials

The George management team recognised that the capital expenditure required to upgrade the George bulk water infrastructure to provide for the current and future developments is significant, and places an enormous strain on the municipality's financial resources. The initiative was taken to approach National Treasury to search for a solution.

Executive Mayor Leon van Wyk lauded the team of senior management and officials who put the funding application together, having only one month until the closing date for applications, and working around the clock to ensure a credible and compliant submission.

Cllr Jacquique von Brandis
– BFI infrastructure grant
Scan QR Code



Earthworks are almost completed, with the major excavation for the Water Treatment Works extension consisting of some 20 000 metric cubes of earth material to be stockpiled on site for re-use elsewhere on other components of the BFI project, as well as other possible municipal projects.

"The approval and feedback from the Department of Water and Sanitation following the application meeting is a testament to the skilled and innovative Civil Engineering Services planning staff we have in George. The Council of George can rightly be proud of the team of senior management and officials who put together this funding application at short notice," said Mayor Van Wyk.

Impact on citizens

Municipal Manager Dr Michele Gratz said that the impact of this funding will be immense for George and the 212 120 residents we service. Investing in water services will increase the revenue of the municipality and allow further development that increases the rates base of the municipality, allowing for investment and increasing job creation.

"This is a major milestone project for the sustainability of our city that will stimulate housing and economic development that had to be halted in recent years as bulk water and sanitation infrastructure had reached maximum capacity. The project will also eradicate the current discharge of sludge from the Water Treatment Works into the sewerage system, and that has had a negative impact on downstream sewer pump stations. Water security is required to improve the quality and amount of investment to support growth and job creation," said Mayor Van Wyk.

The objectives of the project are to ensure the ability to provide adequate potable water for the current population and for future developments, to provide water security of water supply, to support social and economic development and to reduce water pollution.

George

Making it happen



Work done at the New Water Treatment Works.

River Pump Station equipment will include the replacement of 2 x 100l/s pump sets, 2 x 50 to 100l/s VSD pump sets, and 2 x 0 to 25l/s VSD pump sets, with appropriate new pump sets, and includes the replacement of electrical control equipment. The Kaaimans Pump Station discharges into the Garden Route Dam and can supply approximately 25% of the raw water requirement during periods of good rainfall.

Status: The preliminary design report has been completed and an alternative is being considered with more appropriate and durable pumps that are more resistant to the abrasion caused by suspended material in the raw river water.

Component 9 and 10

The new 14,5MI Pacaltsdorp West Reservoir; New 3MI Pacaltsdorp East Reservoir, 300kl tower and pump station will address the inadequate emergency and balancing storage in this suburb.

Status: The conceptual design and proposed site layout design are nearing completion, to be followed by the detailed design. This will be done in parallel with the process to ensure compliance with all environmental requirements and the land re-zoning processes.

Component 11 and 12

A new pump station and control valves will be provided at the existing Thembaletu West reservoir and tower; a new 8MI Thembaletu East Reservoir, 900kl tower and pump station will provide adequate potable water storage, and increase security of potable water supply to Thembaletu as well as provide capacity to meet future development.

Status: The conceptual planning, system functionality and component sizing have been completed and designs can now commence.

What are the Potable Water Security and Remedial Works components funded by BFI?

The project consists of 12 components, some of which will be executed in more than one construction phase.

Component 1 and 3

The refurbishment of the existing Sludge Discharge System, Phases 1 and 2, will take place at the Eden, Meul and Schaapkop sewer pump stations and will include a new sludge treatment facility at the Water Treatment Works, a 300m 315mm diameter sludge pipeline, an upgrade to the new Water Treatment Works pump station and a new 12,4km 1 000mm diameter pump line.

Status: Work is almost completed on the Schaapkop donga stabilisation. Construction took place to stabilise and rehabilitate the slope on the riverbank to protect the pump station from an encroaching donga that was exacerbated by the November 2021 floods, and create a safe working space for the pump station contractor. The first phase of the upgrading and refurbishment of the Meul sewer pump station has commenced. This contract includes a new Motor Control Centre at the Eden sewer pump station.

Component 2

The 20MI/d extension to the New Water Treatment Works (New WTW).

Status: The first contract, the civil engineering component, has commenced. The tender for

the mechanical, electrical and instrumentation (MEI) works has closed and is in the evaluation phase. This is the largest single component of the BFI project and is valued at approximately R500-million.

Earthworks are almost completed, with the major excavation for the WTW extension consisting of some 20 000 metric cubes of earth material to be stockpiled on site for re-use elsewhere on other components of the BFI project and other possible municipal projects. Placing of concrete will commence shortly and for this purpose two tower cranes of 23m height will be installed on site.

Component 4

The Upgrading of Garden Route Dam Outlet and Supply includes the replacement of the existing 600mm diameter raw water pipeline from the intake tower at the Garden Route Dam to the raw water pump station, with a new 800mm diameter stainless steel pipeline to accommodate a higher flow rate.

Status: The preliminary design has been completed, to be followed shortly by the final design, and thereafter the procurement process to appoint a contractor.

Component 5

2 x 1 100kVA generators will be installed at the Garden Route Dam raw water pump station. This will mean that during load-shedding or any other power outage, raw water can continue to be pumped to the Water Treatment Works for processing for drinking water supply.

Status: The tender has closed and is in the process of being evaluated.

Component 6

A new additional 30MI raw water storage balancing dam will be constructed, together with a 3,4km long, 600mm diameter raw water pipeline that will be installed to secure sufficient raw water storage for supply to the New Water Treatment Works (11th Avenue, Denneoord). The new raw water dam will supplement the existing storage dams for provision of raw water to the two Treatment Works.

Status: The design process is progressing well with consideration of two alternative positions in order to select the most cost-effective solution. Thereafter, final designs and procurement of a contractor will commence.

Component 7

The rehabilitation of the Old Water Treatment Works, located at 9th Avenue in Denneoord, will allow for the refurbishment of the works, with a design capacity of 25MI/d, but currently only operating at 18MI/d, to approximately 24MI/d.

Status: Construction has commenced on the upgrade of the Old Water Treatment Works to increase the treatment capacity, and further contracts have been awarded for the supply of filter sand, installing of new fencing to improve security, and a chlorine off-gas handling facility to improve health and safety.

Component 8

Refurbishment of the Kaaimans

PLASTICS FOR AFRICA
the original plastics shop

HOME • GARDEN • PETS • CATERWARE

ADDIS[®] SPECIALS

GIFTWARE • TOYS • PARTIES & LOADS MORE

100 PIECE SET
R399⁰⁰

FOUR SIDED 530ML LOCK
R19⁰⁰
500ML R 24⁰⁰

BOWL AIRTIGHT
730ml **R29⁰⁰**
1.25lt **R46⁰⁰**
2.2lt **R65⁰⁰**

4 SIDED LOCK JUG 2LT
R99⁰⁰

SMALL WASHING BASKET
R58⁰⁰

SWING LIFT 25LT
R180⁰⁰

SWING LIFT 50LT
R199⁰⁰

SMALL BIN 12LT
R55⁰⁰

BUCKET RECT
R60⁰⁰

CLOTHES
R19⁹⁰

4 SIDED LOCK 2.8LTDIV
R60⁰⁰

Find us on **Facebook**

Twitter FOLLOW US

Cnr. Mission & Commercial Rd, George | 044 871 5630

WHILE STOCKS LAST

George to spend nearly half a billion on road upgrades

R148-million is being spent on major road upgrades in the 2022/23 financial year with another R350-million invested in our road infrastructure over the next three financial years.

George Executive Mayor Leon van Wyk said the municipality is committed to optimising road upgrades across the city. "Due to budget constraints, the George Municipality is forced to prioritise roads in poor to very poor condition. We continually pursue other sources of funding to address as many issues as possible. These projects will utilise funding from three sources over the next three financial years including George Integrated Public Transport Network (GIPTN) funding, own budget and Municipal Infrastructure Grant (MIG) funding," said Van Wyk.

"The municipality is grateful for these additional income sources that have enabled us to upgrade overall infrastructure and pedestrian experience, which ultimately benefit business, promote investment and improve quality of life," said Brown Johnson,

Portfolio Councillor for Civil Engineering Services.

Accessibility

Acting Director of Civil Engineering Services Lionel Daniels confirmed that the municipality will not just upgrade the road surfaces during such projects. Underground services such as storm water and sewerage lines will also be upgraded as well as the rehabilitation of roads used by buses and other heavy vehicles. The existing road pavement structure is reviewed and the surface of the pavements, the kerbs and obstructions on the sidewalks are addressed to allow for universal accessibility, a cornerstone of the GO GEORGE bus services.

How roads are selected

The George Municipality's Pavement Management System (PMS) is a planning tool for the maintenance and repair of the entire George municipal road network to optimise road conditions, and is used to prioritise roads for upgrading, repairs



The existing storm water infrastructure in the vicinity of Mbewu, Spetose and Dick streets is undergoing a radical upgrade.



Cllr Brown Johnson on roads upgrade Scan QR Code to view video



The Market Street upgrade is continuing in the CBD.
Photo: Alida de Beer



Roadworks underway in Rosedale Main Road.

and rehabilitation in the George municipal area.

As part of the compilation of the PMS, each road is investigated by specialised pavement engineers and its condition classified from very poor (high priority) to very good (low priority). Factors considered during the classification process are the structural, aesthetic, surface and formation condition as well as traffic volumes and functional class of the road. Integrated Development Plan (IDP) requests and the number of complaints registered per road also play a role.

From the investigation, treatment options are specified for each road which could vary from a diluted emulsion, minor patching and crack sealing to asphalt, rehabilitation, reconstruction, replacement with brick paving and more. Further to the above, although a road may be regarded as high priority, it may

be postponed depending on the municipality's ability to afford the proposed remedial work.

Alternatively, a road that was regarded as good, may deteriorate very quickly to poor, for instance after flooding and/or a sudden increase in heavy traffic. Constant monitoring and evaluation are therefore required and may result in the reprioritisation of roads.

BREAKDOWN OF PROJECTS PLANNED IN THE 2022/23 FINANCIAL YEAR AND OUTER YEARS

Roads (GIPTN) (Budget allowed)

- Golf Street (Phase 1 & 2) - Rehabilitation of 1,5km of Golf Street between Circular and Main streets, design in progress with construction planned for end of September 2022. (Value - R15 921 000)
- Tabata Street (Phase 2) - Rehabilitation of 600m.



Roadworks in Courtenay Street.



Rehabilitation work is done on 800m of road surface in Mission Street.



Tabata Street is undergoing upgrading.

- Construction commenced beginning of June 2022. (Value - R15 437 100)
- Market Street (Phase 4 & 5) - Rehabilitation of 450m. Construction commenced 24 May 2022. (Value - R20 192 500)
- Airways Road and associated circles - Rehabilitation of 650m and amendment of three circles commenced 28 May 2022. (Value - R2 500 000)
- Mission Street - Rehabilitation of 800m of road surface between kerbs. Work commenced beginning of June 2022. (Value - R4 500 000)

- Memorium Street - Rehabilitation of 100m of road surface between kerbs. Work to commence end of June 2022. (Value - R1 500 000)
- Triumph/Park Street intersection rehabilitation. (Value - R1 250 000)
- PW Botha Rand Street extension, upgrading of the intersection to accommodate the metro housing development. (Value - R5 500 000)

Roads (GIPTN) designs, awaiting budget allocation

- Rose Street - R20 000 000
- Beukes Street - R15 000 000

- Fiskaal Road extension - R12 000 000
- PW Botha Street - R64 000 000
- Ngcakani Street (Phase 2 - 4) - R59 000 000
- Tabata Street (Phase 3 - 5) - R40 000 000

Road upgrades funded by private developments

- York Street circles - Construction to commence end of June 2022 (Value - R35 000 000)
- Sweetpea Intersection upgrade. Value to be determined following the design approval.
- Kingswood / R102 road link - Value to be determined following the design approval.
- Kraaibosch Road Network upgrade - Construction of Road 2 & 3 in terms of the Kraaibosch Road model. Value to be

determined following the design approval.

Roads (MIG funded)

- Ngcakani Street (Phase 1) - (Value - R25 000 000 - subject to MIG appraisal approval)
- Rebuild of streets in Greater George - R7 000 000
- Resealing of streets - R10 000 000
- Upgrade of existing roads in Delville Park - R10 000 000
- Rooidraai Road: Repairs to slip failure - R18 000 000
- Peters Road: Repairs to slip failure - R1 500 000
- Remedial work to Whites Road - R2 500 000
- Upgrade of Saagmeul Street - R8 500 000
- Paving of roads in Haarlem - R3 000 000



henra

We offer a wide range of services which include, but are not limited to the following:

- Rehabilitation and resealing of existing roads
- New roads - major and minor
- Asphalt works
- General civil engineering
- Pipelines
- Bulk earthworks
- Township infrastructure
- Concrete structures (reservoirs, water treatment,)
- Electrical substation civil works
- Plant rental and hauling



TEL: 044 695 2376 | FAX: 086 608 6151 | E-MAIL: admin@henra.co.za

Hartenbosch Farm 217, Oudtshoorn Road R328, Hartenbos, Mossel Bay

Printed and distributed by Group Editors

George

Making it happen



Why George?

George is experiencing an influx of people as one of the most popular lifestyle destinations in the country. George Herald asked readers on Facebook what it is they like about George.



PATRICIA KOLOZI:

I like George because it's quiet. It's different from other places. I originally come from Sterkspruit in the Eastern Cape, but I moved here for a job and at the time it seemed like a good, safe area to raise my children. We have much less crime in George than in the rest of the country. It's not rough here and you can still walk around without feeling unsafe. I can even let my car sleep outside.

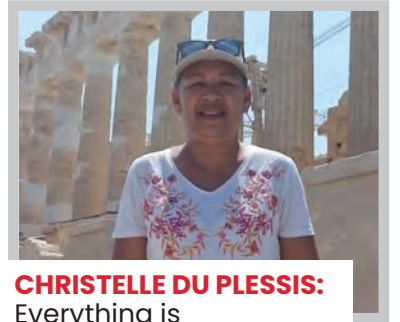
ANNELI SCHERRIT KNOESEN:

Ek sien baie mense kla oor oorbevolking. Dit is miskien 'n probleem as dit kom by voorsiening van natuurlike hulpbronne en basiese dienste, maar ons is so bevoorreg om in 'n mooi, skoon dorp te woon. Ek was al in baie dorpe in die land, en ons het baie om voor dankbaar te wees. In stede daarvan om te kla en negatief te wees, hoekom kyk ons nie eerder waar ons kan help nie?



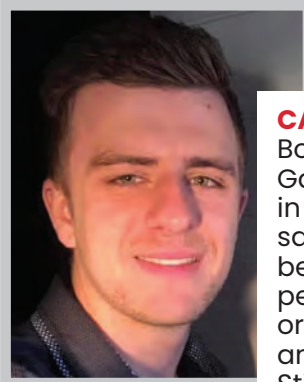
RENIER ZEELIE VAN CLANWILLIAM:

Besig, maar nie te besig nie. Sentraal, naby lughawe, naby see en genoeg besighede om als te kry wat jy soek. Ek sal graag George toe wil trek.



CHRISTELLE DU PLESSIS:

Everything is conveniently situated. The mountain and beach are thrown in for free.



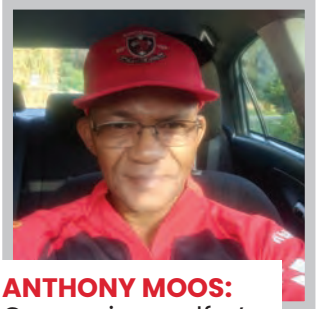
CAMERON GIANI:

Born there, but working in Gauteng. Unfortunately in George getting a good salary is far and few between, so younger people have to leave in order to grow their careers and make a proper living. Still come down for holiday to see parents though. Love George!



NATASJA LAUBSCHER VAN ZYL:

It's beautiful and clean in George. Hope we don't get the bad with the good.



ANTHONY MOOS:

George is a golfer's paradise and also has the ocean.



DRIEKIE FOUCHÉ:

Die mooiste. Die beste plek om in te bly. Ek bly al 27 jaar hier. Ek het George gesien groot word met al die nuwe "inkommers". Mense wat na veiligheid, vrede en die mooi kom soek het, het dit hier gekry. En ek hou van alles hier! As jy kla, is hierdie mooi plek nie vir jou nie.

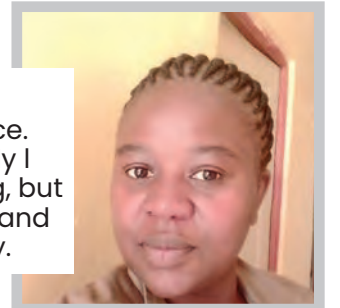


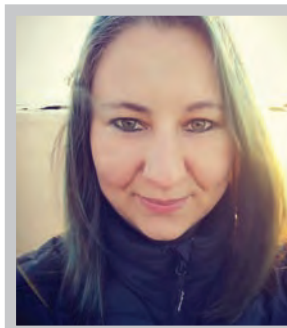
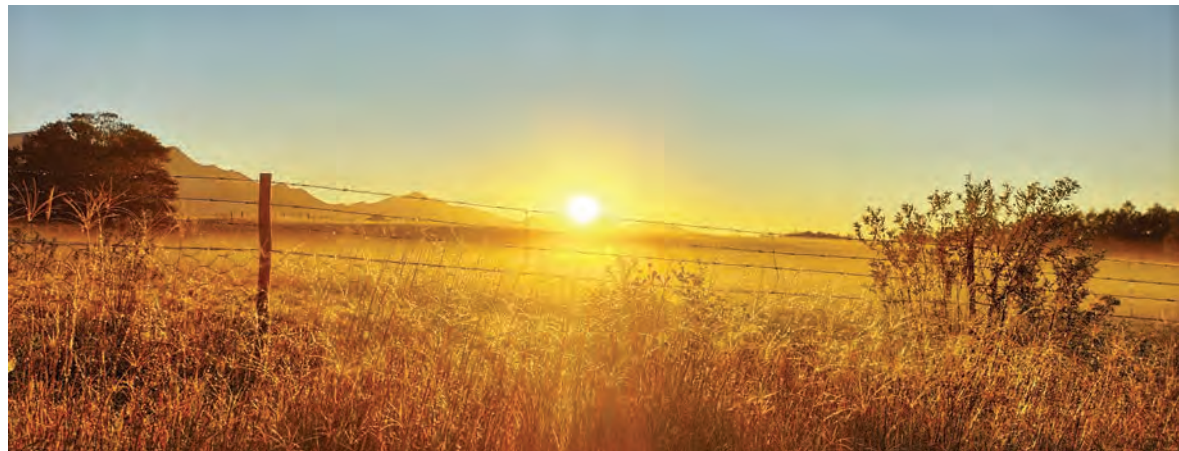
ANNA DU TOIT:

Ons is nou amper 16 jaar in George. Ons woon in Wilderness en die natuur hier is wonderlik. Ek sê altyd dis die Tuin van Eden. In die 16 jaar kon ons nog nie alles doen wat ons wou nie. Mosselbaai, Knysna, en omliggende dorpie is pragtig om te besoek. As ek kan wil ek vir altyd hier bly. Ons tyd loop uit en mens word vinnig oud. Die geld is miskien in Johannesburg en Pretoria, maar ek wil nie weer op daai dorpe bly nie.

NELLIE BAKASA:

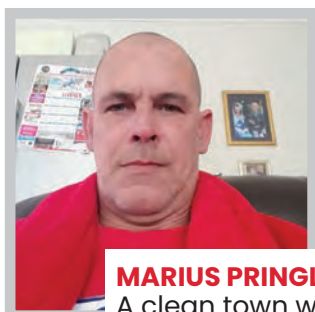
A clean, peaceful, quiet place. I loved George. Unfortunately I could not stay there for long, but George is a beautiful place and great place to raise a family.





ANNEKE OLIVIER:

All the city people are moving here because of low crime but they are bringing it with them. They come and build and develop estates like crazy not realising that they are taking away the calm, beautiful nature and turning it into a city as well. George is one of the most beautiful places to live in but it is getting really expensive to make a living here.



MARIUS PRINGLE:

A clean town with friendly people and a well-run municipality.



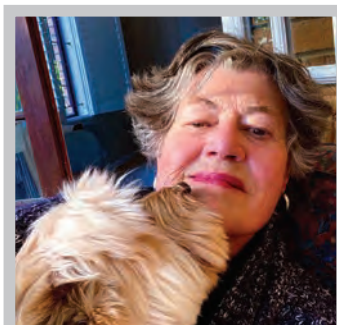
BRENDON ADAMS:

George sit darem nie vir dae sonder krag en water soos ander dorpe nie, en ja, daar word begroot om solar infrastructure op die been te bring om te keer dat George se inwoners nie Stage 1 load-shedding kry nie. Ek was 'n paar maande gelede in Bloemfontein en Johannesburg - mense, die strate is vol potholes.



JACQUES OOSTHUIZEN:

George is 'n gemaklike plek en ten minste kan mens darem nog op jou eie rondbeweeg. In die groter plekke is dit so gevaarlik dat mens nie meer alleen kan rondbeweeg nie.



INGRID MARITZ:

It's a city, and yet not a city. A wonderful place to bring up your kids; it has all the amenities we require, and its beauty adds to your quality of life. I have been here for 42 years and have seen it grow and I still love George!

Composting facility ready next year

George Municipality started with the establishment of a compost facility in the 2019/2020 financial year. In June 2021, the Department of Environment, Forestry and Fisheries promulgated Norms and Standards for the Treatment of Organic Waste. In terms of these norms, compost facilities must meet certain standards, and one of them is that the final platform layer works must contain a concrete platform or include a clay layer within its layer structure.

Portfolio Councillor for Community Services: Parks, Refuse and Environment, Jean Safers, confirmed that this construction is in line with the norms and standards for the treatment of organic waste. Builder's rubble is used to fill the ground to the desired level, after which a layer of clay is laid on top. The working surface will consist of a wearing course

material classified as G5, according to Committee of Land Transport Officials (COLTO) specifications. The idea is that the green bags that are collected from residents every week will go into a source which will make up compost. Eventually garden refuse, kitchen waste and sludge from the sewerage works will be added to create the compost. This is all to reduce the amount of refuse going into landfill sites in the municipal area.

Work is underway to expand the size of the platform for future use and the municipality intends to operate the compost facility from 1 July 2023.

Phase 1 of platform A of the composting facility will be completed in the 2022/2023 financial year. Phase 2 of platform A is also underway, and the public is requested to divert and dispose of builder's rubble at the Gwaing

waste disposal facility to assist the municipality in finalising phase 2 of platform A. An attenuation pond will be constructed in the 2022/2023 financial year to treat and store storm water run-off. Platform A will only be able to accommodate 76% of the George Municipality's green waste. However, once platform B is built, all green waste will be accommodated. The maximum number of windrows (long lines of raked green matter) that platform A can accommodate is 13. This equals a maximum volume of 2 486m³.

The average volume of compost produced for six weeks is 243m³.

The municipality urges the public to dispose of all builder's rubble at the Gwaing landfill site instead of dumping illegally, as the material is required to complete the construction of the compost facility. We also urge the community to use the three-bag system (black, blue and green) to the benefit of reducing the landfill footprint. All three bags must be placed out early on the morning on the designated refuse collection day.



Compost facility
Cllr Safers
Scan QR to view video



Wouter van Niekerk (WJ Civils), Wessel Robertson (Head: Cleansing Services), Sivuyile Mtila (Senior Manager: Environmental Services), Leon van Wyk (Executive Mayor of George), Portfolio Councillor Jean Safers (Community Services: Parks Refuse & Environmental), Charles Lubbe (Project Manager: Solid Waste), and Portfolio Councillor Henry Hill (Planning & Development) at the construction site.

George

Making it happen



Streetlight replacement from CFL to LED well underway

The streetlights retrofitting project was started a few years ago with funding sourced from the Energy Efficiency Demand Side Management programme (EEDSM) managed by the Department of Energy (DOE).

A total of 1 885 old compact fluorescent lights (CFL) have been replaced over the past few years with the light-emitting diode (LED). Electro-Technical Services requested additional funding to install a further 1 000 LED lights for this financial year.

According to the Director for Electro-Technical Services, Bongani Mandla, the 1 000 retrofits are to be completed before the end of this year. "This is part of the directorate's efforts to become energy efficient," said Mandla.

"The project started last month with 530 lights already replaced. The balance of 470 lights will be retrofitted before year-end and the

department is well-positioned to achieve this target. The following areas have already been fully replaced: Asazani (a portion of Thembaletu), Borchards, Conville, Protea Park and Parkdene. This is also a phased-in project, with Denneoord and Kleinkrantz targeted to start in August 2022. This phased-in approach will continue until we have replaced or retrofitted all lights to LED in the upcoming financial years."

The benefits are that George Municipality is already using less energy and is able to slowly reduce the bulk electricity bill. With the use of LED, there is also less maintenance as LEDs have a significantly longer lifespan compared to incandescent and other light types. This will free up time for the relatively small team to get to other streetlight complaints quicker and further improve service delivery.



York Street at night, LED Streetlights.

Traffic lights at 40 major intersections now powered during outages



Mayor Leon van Wyk with Gerrit Carolus, Superintendent Streetlights (far left); Thomas Scheepers, Specialised Electrician Streetlights; and Edward Nqumse, Action Senior Manager Services (far right).

Forty major road intersections in George are free from Eskom's load-shedding, planned and unplanned power outages, and the traffic flow continues seamlessly. This is thanks to the installation of the uninterrupted power supply (UPS) units energising the traffic lights during outages.

The Electro-Technical Services team has successfully completed phase 1 of the UPS installation project. The installed UPS, which amounted to R2,5-million, makes use of batteries that are charged via our electrical supply. The UPS, which is eco-friendly and energy saving, automatically kicks in and operates the traffic lights should the electrical supply be interrupted for any reason – with an average duration of 4 hours before the battery needs recharging.

"This is certainly a game changer at the major traffic intersections in George during peak hour load-shedding. The UPS housing is IP65 rated which allows it to be water and dust proof," said Mayor Leon van Wyk. "The measure is one of several sustainable energy solutions the municipality is introducing to reduce the impacts

Cllr Mbete – UPS update
Scan QR code to view video



associated with load-shedding, including traffic congestion and human resources such as traffic pointsmen."

The Director for Electro-Technical Services, Bongani Mandla, commended the relatively small traffic lights team who, with a specialised skills set and commitment to service delivery, address ongoing faults and maintenance at all traffic light intersections in the George area.

More UPS units are to be installed in the remaining traffic lights in the coming in the 2022/23 financial year.



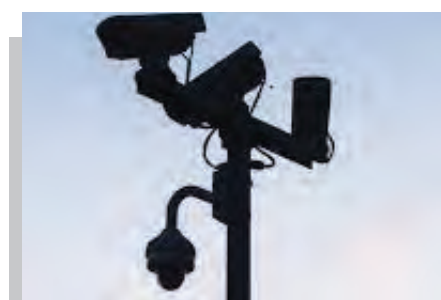
Uninterrupted power supply (UPS) units make motorists' lives easier and the roads safer during load-shedding.

Big Brother is watching

George has positioned itself as an intermediary city in South Africa, utilising its natural attractions and relaxed lifestyle in the Garden Route to position itself as a growing business centre. A smart city uses information and communication technology (ICT) to ensure operational efficiency and to provide a better quality of government service and citizen welfare.

George continues to embrace the elements of smart city concepts by using CCTV cameras for safety and security monitoring of the public transport bus service.

The municipality is planning on expanding the CCTV footprint throughout the city to add to the already extensive 616 cameras installed. 142 cameras are currently installed along GIPTN main bus routes with a further 474 cameras located in and around municipal buildings and key infrastructure points.



CCTV cameras are used for safety and security monitoring.

The expansion, valued at R10-million, will take place during the new financial year and will focus on areas that currently don't have many cameras, in particular sites that are prone to repeated vandalism.

The CCTV Control Centre currently operates seven days a week for extended hours. An excellent working relationship is maintained with SAPS in the pursuit of safety and security for all communities.

Vernon Petersen – CCTV expansion Scan QR Code to view video





The 300kWp (kilowatt peak) solar plant at the Civic Centre parking lot was commissioned in September 2021.

The George Municipality has embarked on installing photovoltaic (PV) solar plants projects in its facilities and buildings to reduce energy consumption from Eskom, thereby cutting down on electricity costs and increasing sustainability.

The seven envisaged projects are to be rolled out in three years to the following plants and buildings:

- 400 kilowatt peak (kWp) PV at the Outeniqua wastewater treatment facility
- 500 kWp at the PV Gwaiing wastewater treatment facility
- 400 kWp PV plant at the Denneoord New Water Works facility
- 20 kWp PV + 40 kilowatt hour (kWh) battery storage for the Electrotechnical Services building
- 4 kWp PV + 10 kWh battery storage for the Tourism building
- 1 kWp PV + 5 kWh battery storage for Schaapkop substation
- 1 MWp solar farm (ERF464 – Municipal land)
- 8-9MWp bigger solar farm (location still to be finalised)

Some of these projects are subject to feasibility studies during the detailed design process, funding, and various other processes such as environmental authorisations. However, implementation to some is imminent. Project on the Outeniqua wastewater treatment facility, Gwaiing wastewater treatment facility, battery storage for the Electrotechnical Services building, Tourism and Schaapkop PV plants will be implemented in the 2022/23 financial year. The rest of the plants are still in the environmental approval phase and will be implemented in the 2023/24 financial year. These projects will be funded from various streams, including the municipal own funding, external loans as well as grant funding where applicable.

Benefits to the municipality and customers

According to the Director for Electro-Technical services, Mr Bongani Mandla, the successful implementation of these PV solar plant projects will be beneficial to both the municipality and the consumer. "The PV Solar Project for the Municipal Facilities is aimed at reducing the load demand of

the facilities and municipal offices, and therefore cutting the cost of electricity purchased from Eskom. Additionally, it is to ensure that the facilities and office buildings meet their carbon emission reduction targets by powering most of their loads with energy generated from a clean and renewable source," Mandla said. "Also, for the municipality to play its part in the development of energy industry to create jobs and diversify the economy.

"The battery storage project, on the other side, will also serve to ensure that service delivery remains uninterrupted at some municipal offices during power outages," Mandla added.

First PV project yielding results

Portfolio Councillor for Electrotechnical Services Nosiselo Mbethe confirmed that a footprint of PV solar plant installation in one of the municipal properties has already been created. "The 300kWp (kilowatt peak) solar plant at the Civic Centre parking lot was the first solar project to be completed and was commissioned last year September," she said.

Cllr Mbethe said the solar plant installed at the Civic Centre parking lot is already yielding positive results. "The energy produced from the system supplies the Civic Centre building and the excess flows into the grid and supplies the neighbouring houses. The plant produces on average 41 500 kilowatt hours (kWh) of energy a month, totalling an average of 500 000kWh of energy per year. The payback period is in the order of seven (7) years, and the plant has an estimated operational lifetime of 25 years. The total savings in carbon dioxide emissions would be in the region of 9 027 tonnes of CO₂ over the plant's lifetime," Cllr Mbethe added.

Renewable Energy Policy in place

"We have recently approved a Renewable Energy Policy that essentially facilitates the commitment of George to a resilient, integrated municipal energy system with a diversified energy mix to provide the least-cost, reliable energy for our



**Director for Electro-Technical services
Mr Bongani Mandla
Scan QR to view video**



The energy produced from the 300kWp (kilowatt peak) solar plant at the Civic Centre parking lot supplies the Civic Centre building and the excess flows into the grid and supplies the neighbouring houses.



**Portfolio Councillor for Electro-Technical Services
Nosiselo Mbethe
Scan QR to view video**



The 300kWp (kilowatt peak) solar plant at the Civic Centre parking lot helps keep systems going during load-shedding.

residents and businesses," said the Executive Mayor of George, Ald Leon van Wyk.

"Our immediate priority is the electricity sector where renewable technologies at different scales can be deployed on site, or electricity wheeled across the grid and aggregated to offer a range of immediate options to all customers over time," Mayor van Wyk added.

"It is critical that George can integrate more renewable energy to keep electricity prices down to aid the provision of low-cost energy to residents and businesses to drive economic growth and job creation," Ald van Wyk concluded.



All of the inverters which will convert DC power from the panels into AC electricity have been installed in a closed-compartment room.



ROAD WORKS IN PROGRESS

Please note we are bringing you better roads for a greater driving experience. Our main service roads are currently getting an upgrade.

We apologise for any inconvenience.

#KindlyDriveWithCaution

GARDEN ROUTE
MALL




[gardenroutemall.co.za](https://www.gardenroutemall.co.za)