

CEILING & ELECTRICAL PLAN 1:100

External AC units to be placed on 800 x 350 6mm thick steel plate welded to 75 x 75 1.5m high steel pole on 300 x 300 6mm steel plate bolted to RC slab. All steel work to be galvanized.

KEY TO ELECTRICAL PLAN:

- 1200mm DOUBLE TUBE SURFACE MOUNTED FLUORESCENT LIGHT FITTING
- WALL MOUNTED WEATHERPROOF EXTERNAL LIGHT FITTING
- SINGLE LIGHT SWITCH
- QUADRUPLE LIGHT SWITCH
- SINGLE PLUG POINT
- TELEPHONE POINT
- NETWORK POINT

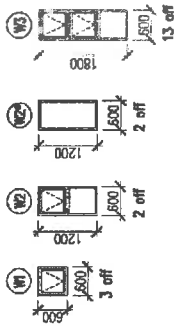
NOTE:

All light fittings, electrical wiring and power points to be surface mounted, or power stringing.



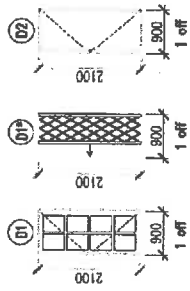
FLOOR PLAN 1:100

WINDOW SCHEDULE:
TOP HUNG PIONEER COATED COLOR BLUE ALUMINUM WINDOWS



DOOR SCHEDULE:

- D1 - COTTAGE PANE POWDER COATED COLOR BLUE ALUMINUM SINGLE DOOR
- D1P - STEEL FOLDING SECURITY DOOR
- D2 - SEMI-SOLID TIMBER DOOR



NOTE:
WALL GLAZING TO BE TINTED
6mm SHUTTER-PROOF GLASS

FINISHES SCHEDULE:

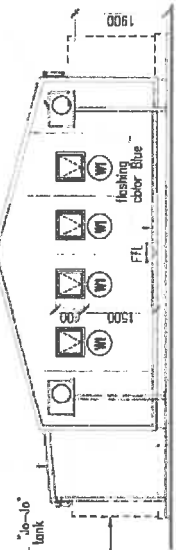
1. FLOOR FINISH: 20 mm thick treated Marine ply floorboards, covered with 2.5mm thick "SUPERLEK" vinyl sheeting, color "Light Gray"
2. WALLS: Sandblast interlocking panels with 40mm fire resistant high-density foam core of U-value = 0.35 W/m² C; with 0.5mm rigidised Chromadek on both sides, color White, providing flush waterproof joint.
3. CEILING: Ceiling panels, color "White", by manufacturer.
4. BOOK SHELVES - 36 off: 2100(H) x 900(W) x 300(D) shelve unit to have 4mm plywood backing with 5 adjustable shelves, manufactured from SA pine boards treated with "Treat" tank stain + 2 coats Polyurethane Clear Varnish.
5. TOYS CUPBOARDS - 4 off: 2100(H) x 900(W) x 600(D) build from "Melamine" with lockable doors and 5 (five) adjustable shelves each in Red, Blue, Yellow and Green colours.
6. FURNITURE:
 - A - 1800x1200 Chester Desk (Oak Melamine) - 1 off
 - A* - 4 Drawer Desk Height Pedestal/Central boring (Oak Melamine) - 1 off
 - B - High-back chair on wheels, with arms and metal frame + upholstery (Grey) - 1 off
 - B* - High-back chair with arms and metal frame + upholstery (Grey) - 2 off.
 - C - No Arm chair, metal frame + upholstery (Grey) - 20 off.
 - D - 3 in 1 Printer/Fax/Copier - 1 off (not part of Contract)
 - E - 1350 x 900 Computer Desk (Oak Melamine) with Privacy Panels - 5 off
 - F - 900 x 900 Single Pedestal Sponwood Table (Oak Melamine) with Privacy Panels - 4 off
 - G - 800 x 800 Kids PVC table - 2 off
 - H - Kids PVC chair - 8 off

DEPARTMENT OF ROADS & PUBLIC WORKS

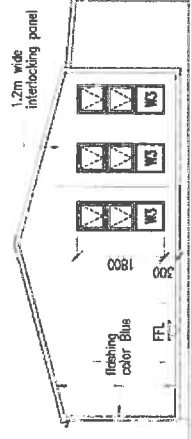
Client	DSRAC
Project	MODULAR LIBRARY WITH KIDS ROOM - CONCEPT DESIGN
Title	PLANS
Designed by	SS
Checked by	SS
Scale	Date
1:100, 1:50	JULY 2013
Dwg. N°	Revision
A/01	

External AC units to be placed on 800 x 350 6mm thick steel plate, welded to 75 x 75 1.5m high steel pole on 300 x 300 6mm steel plate bolted to RC slab. All steel work to be galvanized.

standard canopy - 50% white translucent sheeting

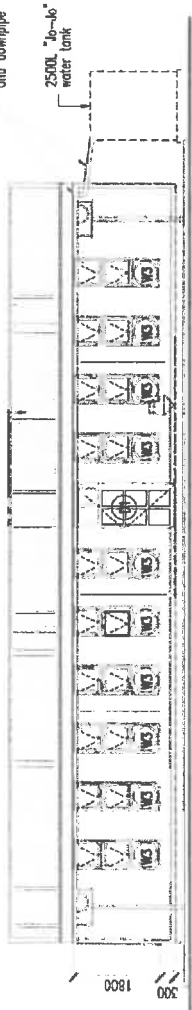


WEST ELEVATION 1:100



EAST ELEVATION 1:100

standard PVC gutter and downpipe



NORTH ELEVATION 1:100

IBR "Cromadeck" roof sheeting color Blue



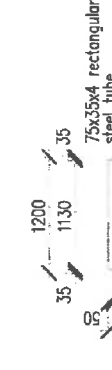
SOUTH ELEVATION 1:100

standard PVC gutter and downpipes

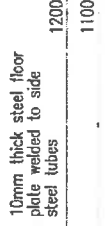
2500L 1/2-1/2 water tank

A/C unit steel support structure

1.2m wide interlocking panel



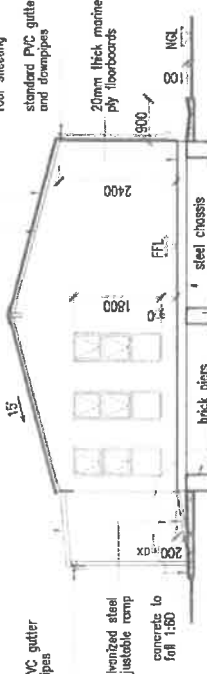
RAMP TOP VIEW 1:50



RAMP SIDE VIEW 1:10

10mm thick steel floor plate welded to side steel tubes
75x35x4 rectangular steel tube
35x35x3 square steel tube
ø50 steel semi-sphere welded to ø12 steel adjustable bolt

standard canopy - 50% white translucent sheeting



SECTION A-A 1:100

standard PVC gutter and downpipes

galvanized steel adjustable ramp concrete to fall 1:50

brick piers by eng.

steel chassis by manufacturer

RC foundation by engineer

DETAIL "A"

"Marine" ply floorboards

steel chassis by engineer

brick pier by engineer

ø50 steel semi-sphere welded to ø12 steel adjustable bolt

concrete slab by engineer

RC foundation by engineer

DETAIL "A" 1:20

DEPARTMENT OF ROADS & PUBLIC WORKS

Client	DSRAP
Project	MODULAR LIBRARY WITH KIDS ROOM - CONCEPT DESIGN
Title	SECTION, ELEVATIONS, DETAILS
Designed by	SS
Checked by	SS
Scale	as shown
Date	JULY 2013
Drwg. N°	A/02
Revision	