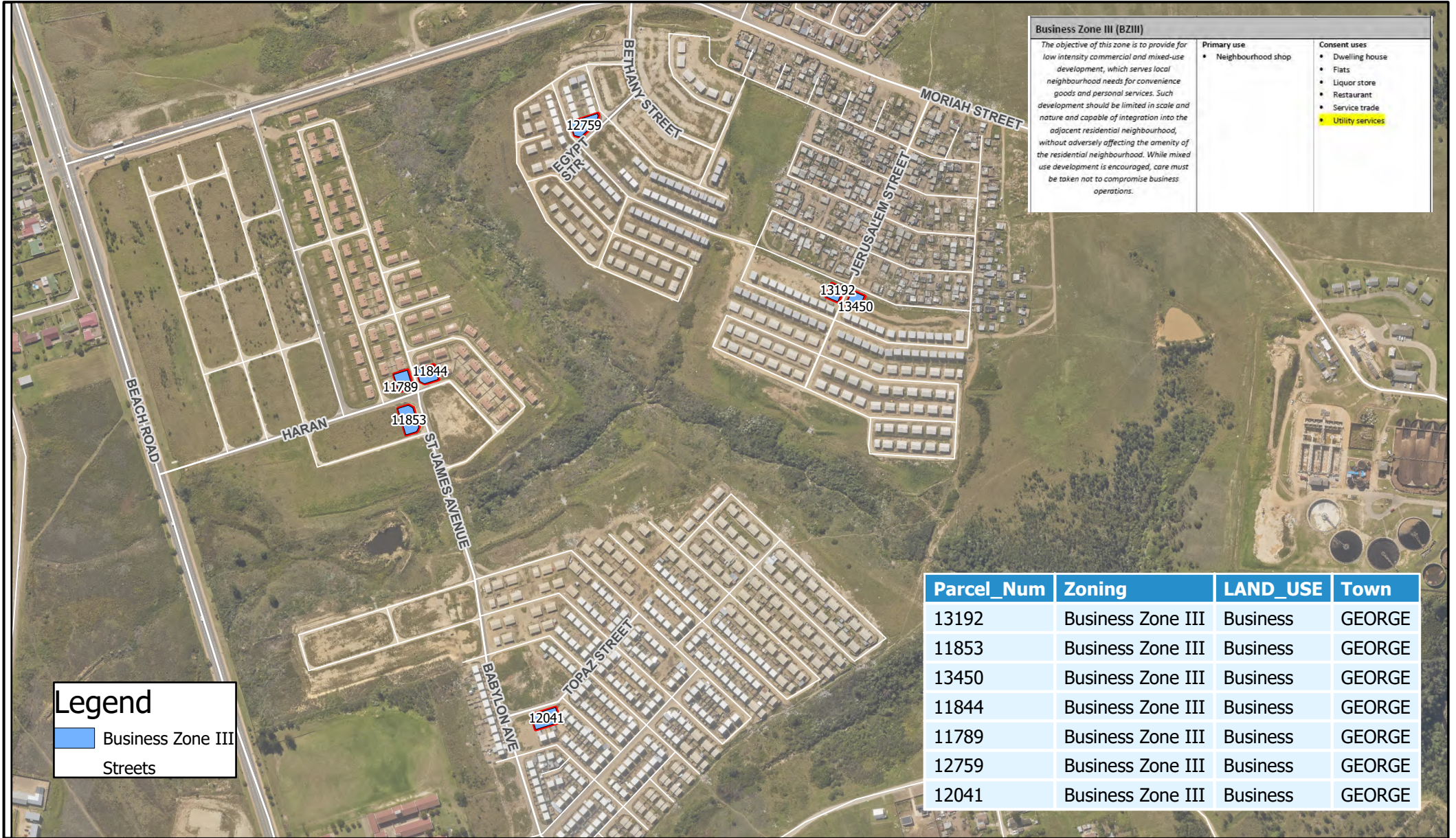


# Business erven - Edenpark



**Business Zone III (BZIII)**

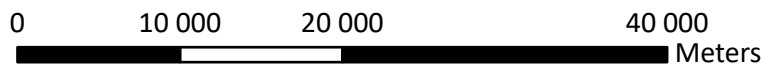
*The objective of this zone is to provide for low intensity commercial and mixed-use development, which serves local neighbourhood needs for convenience goods and personal services. Such development should be limited in scale and nature and capable of integration into the adjacent residential neighbourhood, without adversely affecting the amenity of the residential neighbourhood. While mixed use development is encouraged, care must be taken not to compromise business operations.*

<b>Primary use</b>	<b>Consent uses</b>
<ul style="list-style-type: none"> <li>Neighbourhood shop</li> </ul>	<ul style="list-style-type: none"> <li>Dwelling house</li> <li>Flats</li> <li>Liquor store</li> <li>Restaurant</li> <li>Service trade</li> <li>Utility services</li> </ul>

Parcel_Num	Zoning	LAND_USE	Town
13192	Business Zone III	Business	GEORGE
11853	Business Zone III	Business	GEORGE
13450	Business Zone III	Business	GEORGE
11844	Business Zone III	Business	GEORGE
11789	Business Zone III	Business	GEORGE
12759	Business Zone III	Business	GEORGE
12041	Business Zone III	Business	GEORGE

**Legend**

Business Zone III  
Streets



**1:465 523**  
**Date: 16 May 2023**

Disclaimer:  
The George Municipality accepts no responsibility for and will not be liable for any errors or omissions contained herein.

