



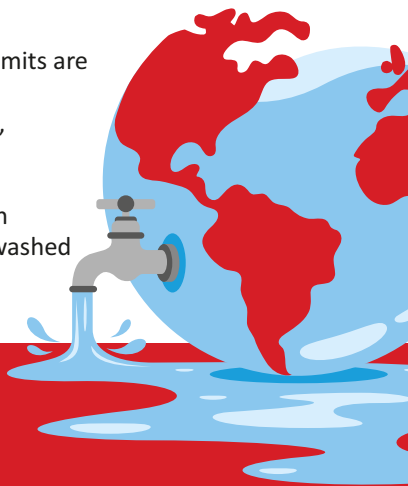
George Municipality has implemented **SEVERE WATER DEMAND MANAGEMENT MEASURES**



The immediate measures to follow are:

EVERY DROP COUNTS

- 1 Households must limit use to **10 kilolitres** per month.
- 2 Other users, businesses and entertainment industries must reduce consumption by 25%, of their average use over the previous or similar six months. This includes all businesses dependant on municipal water.
- 3 Industries must reduce consumption by 15%, of their average use of the previous six months.
- 4 Gardens may only be watered with watering cans or buckets, any time of the day.
- 5 Irrigation / watering of ALL sportsfields using municipal water is **prohibited**.
- 6 Washing of vehicles with a garden hose using municipal water is **prohibited**. Buckets are allowed.
- 7 Cleaning of any outside surface areas using a watering hose (municipal water) is **prohibited**.
- 8 Filling up of any swimming pool or similar used for recreational or other purpose, with municipal water is **prohibited**.
- 9 Where own water from a borehole, water tank, etc. is used, "**OWN WATER**" signage must be displayed.
- 10 Emergency tariffs will be implemented as per **Level 3** of the 2025/26 Tariff list.
- 11 Flow-reducing devices shall be installed where limits are exceeded.
- 12 Contraventions are liable to a fine or six months' imprisonment.
- 13 The use of hoses or other devices by all car wash businesses is prohibited. Vehicles shall only be washed using buckets, unless water is supplied from an alternate source than municipal water.



REPORT all water leaks
044 801 9262 / 66 • a/h 044 801 6300

Report misuse of drinking water on 044 801 6350

Die onmiddellike matriëls is soos volg:



ELKE DRUPPEL TEL

- 1 Huishoudings word tot **10 kiloliter** per maand beperk.
- 2 Ander verbruikers, besighede en vermaaklikheidsplekke moet verbruik met 25% sny, gebaseer op die gemiddelde verbruik oor die voorafgaande of soortgelyke, ses maande. Dit sluit alle besighede in wat van munisipale water afhanklik is.
- 3 Nywerhede moet verbruik met 15% sny, gebaseer op die gemiddelde verbruik oor die voorafgaande ses maande.
- 4 Tuine mag slegs met 'n gieter of emmer natgegooi word, enige tyd van die dag.
- 5 Die besproeiing / natmaak van ALLE sportvelde met munisipale water word **verbied**.
- 6 Was van voertuie met 'n tuinslang met munisipale water word **verbied**. Emmers word toegelaat.
- 7 Die skoonmaak van enige buite-oppervlakte met 'n tuinslang (munisipale water) is **verbode**.
- 8 Die opvol van enige swembad of soortgelyk vir ontspanning of ander gebruike, met munisipale water is **verbode**.
- 9 Waar eie water uit 'n boorgat, watertenk, ens. gebruik word, moet 'n "EIE WATER"-kennisgewing duidelik sigbaar wees.
- 10 Noodtariewe sal volgens **Vlak 3** van die 2025/26 tariewelys geïmplimenter word.
- 11 Vloeiëverminderingstoestelle sal geïnstalleer word waar limiete oorskry word.
- 12 Oortredings is strafbaar met 'n boete of ses maande gevangenisstraf.
- 13 Die gebruik van 'n tuinslang of ander toerusting deur alle karwasbesighede is verbode. Voertuie mag slegs met 'n emmer gewas word, tensy daar van 'n ander bron as munisipale drinkwater gebruik word.

**RAPPORTEER alle
waterlekkie by**

044 801 9262 / 66 • n/u 044 801 6300

Rapporteer misbruik van drinkwater by 044 801 6350





UMasipala waseGeorge uphumeze

AMANYATHELO AQATHA OLAWULO LWEMFUNeko YAMANZI



Amanyathelo akhawulezileyo ekumele
ukuba athotyelwe ame ngolu hlobo:

LONKE ITHONTSI LIYABALA

- 1 Amakhaya kufuneka anciphise ukusetyenziswa kwamanzi ukuya kwiikhilolitha **ezili-10** ngenyanga.
- 2 Abanye abasebenzisi, amashishini, kunye namashishini okuzonwabisa kufuneka bancedise ukusetyenziswa kwamanzi nge-25% yomyinge wokusetyenziswa kwawo kwiinyanga ezintandathu ezidlulileyo, okanye ezifanayo. Oku kuquka onke amashishini axhomekeke kumanzi kamasipala.
- 3 Imizi-mveliso kufuneka inciphise usetyenziso kangangomyinge we -15% okusebenzisa kwayo amanzi kwiinyanga ezintandathu ezidlulileyo.
- 4 Izitya zingankcencshelwa kuphela ngeenkonkxa zokuncenkeshela okanye amathunga nangaliphi ixesha lemini.
- 5 Unkcenkeshelo lwawo ONKE amabala ezemidlalo kusetyenziswa amanzi kamasipala **akuvumelekanga**.
- 6 Ukuhlanjwa weenqwelo ngemibhobho yesitya kusetyenziswa amanzi kamasipala **akuvumelekanga**. Amathunga avumelekile.
- 7 Ukococwa kwazo naziphina iindawo ezingaphandle kusetyenziswa imibhobho yamanzi **akuvumelekanga**.
- 8 **Akuvumelekanga** ukuzalisa naliphi na ichibi lokudada okanye indawo efanayo esetyenziselwa ukuzonwabisa okanye ezinye iinjongo ngamanzi kamasipala.
- 9 Apho kusetyenziswa khona amanzi aphuma kumngxuma wokutsala amanzi, itanki yamanzi njl. Kufuneka kuxhonywe umqondinso othi **"AMANZI AM"**.
- 10 Uluhlu lwamaxabiso kaxakeka ayakuphunyezwa ngokungqamene kuluhlu lweRhafa luka-2025/26
- 11 Izixhobo zokunciphisa ukumpompoza kwamanzi ziyakufakwa apho kubonakala imida khona.
- 12 Abo baphula umthetho bonoxanduva lokuhlawula umdliwo okanye ukuvalelwa entolongweni iinyanga ezintandathu.
- 13 Akuvumelekanga ukusebenzisa imibhobho okanye ezinye izixhobo kuzo zonke iinkampani zokuhlamba iimoto. Izithuthi mazihlanjwe kuphela kusetyenziswa iibhakethi/ithunga, ngaphandle kokuba amanzi anikezelwa komnye umthombo ngaphandle kwamanzi okusela kamasipala.

XELA konke ukuvuza kwamanzi

kwa 044 801 9262/66 okanye emva
kweeyure zomsebenzi 044 801 6300

Xela ukusetyenziswa gwenxa kwamanzi okusela kwa 044 801 6350

